



**GRANT WRITING:  
SKILLS, CHALLENGES AND LESSONS**

**Prof. Karen Sliwa, MD, PhD, FESC, FACC**  
**Hatter Institute for Cardiovascular Research in Africa (HICRA)**  
**University of Cape Town**

[www.hatter.uct.ac.za](http://www.hatter.uct.ac.za)

# WHEN IS THE RIGHT TIME TO START WRITING A RESEARCH PROPOSAL FOR FUNDING?

## Key factors

- Stage of your career
- Type of project you are applying funding for
- Previous funding obtained



# UNIVERSITY GRANTS

- MMED
- PhD
- Travel grants
- Collaborative and project grants

# UNIVERSITY GRANTS I

## Application for grants to individuals

- Covers applications for MMED, MSc & PhD
- Faculty of Research grants for junior staff members of the Faculty

***One can apply for more than one grant***



# UNIVERSITY GRANTS II

## Travel Grants

- Covers all applications for MMED, MSc & PhD
- Funds travel to local (South Africa), regional (Africa) and international meetings
- Applications must be made timely ( e.g. 3 months) prior to conference
- First time applicants must include a CV
- Nature of presentation: Keynote, oral presentation or poster
- Submitted or accepted abstract must be included
- Need signature of HOD!

# MEDICAL RESEARCH COUNCIL GRANTS

- Self-initiated grants
- MRC-career award grants
- MRC-Units



# NATIONAL RESEARCH FOUNDATION GRANTS

- NRF-rating
- NRF grants for rated researchers
- NRF grants for unrated researchers
- NRF-collaborative grants



# FOUNDATIONS

- Discovery Foundation
- Other Foundations



# UNCONDITIONAL RESEARCH GRANTS



Pharmaceutical companies

e.g. Pfizer, Bayer Health Care, Roche, Medtronic

# INTERNATIONAL AGENCIES

- Wellcome Trust
- National Institute of Health (NIH)



# Challenges and Lessons:

## EXAMPLES

- Heart of Soweto Studies
- Pan African Pulmonary Hypertension Cohort (PAPUCO)
- Cardiac Disease and Maternity Studies
- Basic Science: e.g. Peripartum Cardiomyopathy

# HEART OF AFRICA PROJECTS

(Group Leader: Prof Karen Sliwa)

## From Heart of Soweto to Heart of Africa and beyond

Community  
Surveillance



> 1600 adults screened for risk factors. Tibazarwa et al, *Int J Cardiol* 2009

Tertiary Care  
Registry



> 8000 patients subject to advanced clinical profiling (2006 – 2008). Sliwa et al, *Lancet* 2008  
Stewart et al. *Circulation* 2008  
Sliwa et al. *Eur Heart J* 2010

Primary Care  
Registry



> 1300 patients subject to CV risk & clinical profiling. *Eur Heart J* 2011  
*PLOS One* 2015

Interventional  
Trials

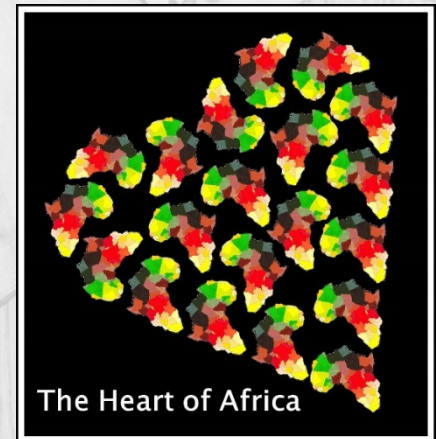


RCT of heart failure management (PhD Sandra Pretorius, 2016)

IT-based  
Education Projects



Cardiac Disease in Maternity Educational Program [www.hedu-africa.org](http://www.hedu-africa.org)







# Soweto Cardiovascular Research Unit

## Welcome to the Soweto Cardiovascular Research Heart Unit

The Soweto Cardiovascular Research Heart Unit (Socru) was set up in January 2006 in order to co-ordinate a range of research into cardiovascular disease in Soweto, South Africa, and to promote research collaboration in this area.

[Read more]

[Click Here for a map to Socru](#)



## Heart of Soweto moves to primary health care

Rationale: Thirty years ago, the Declaration of Alma-Ata recognised the role of social and environmental factors in illness and identified the

[read more](#)

1 2 3 4 5

## News

### Heart of Soweto outreach project receives over R1.6 million from BHP Billiton South Africa



The Soweto Cardiovascular Research Heart Unit (Socru) received a major boost from BHP Billiton South Africa for its Heart of Soweto Outreach Project at the Michael Mponyo Clinic in Pinville, Soweto.

[Read more]

### Heart of Soweto moves to primary health care



Rationale: Thirty years ago, the Declaration of Alma-Ata recognised the role of social and environmental factors in illness and identified the importance of primary health care as the key to achieving the WHO goal of "Health for All".

[Read more]

[VIEW ALL]

## Primary care: prevention in youth and adults



In-reach programme to extend the successful Heart of Soweto hypertension and heart failure management programmes into a broader chronic disease management programme, and then to extend this into the Soweto primary health clinics.

[Read more]

## Projects



The Soweto Cardiovascular Research Unit has been involved in a number of projects since it first started up. Currently it is occupied with four main ongoing projects related to cardiovascular research in South Africa.

[Read more]

## Exercise

### Roll up prep



The Roll Up Prep will utilise and strengthen the

[Read more]

### Rowing with resistance band



Exercise accessories modify basic exercises to enhance their effectiveness

[Read more]

## Featured recipes

### Bran muffins



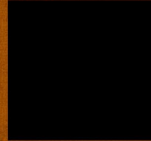
Delicious and full of goodness, these muffins make a perfect lunch box treat or snack on the go. [Read more]

### Vegetable and lentil lasagna



Perfect for winter time, this vegetable-packed lasagne is the ideal tasty family meal. [Read more]

## YouTube



[See all videos](#)

**Socru - Soweto Cardiovascular Research Unit** on Facebook

Like

4 people like Socru - Soweto Cardiovascular Research Unit.

Richard Shafika Lorraine

## Gallery



[See all photos](#)

## Contacts

Soweto Cardiovascular Research Unit  
The Wits Consortium Research Centre (Bara)  
Orange Building  
Corner of College and Theatre Roads  
Behind the Nurses residence  
Chris Hani Baragwanath Hospital  
Soweto  
Gauteng  
Tel: +27 (0)11 983 6501

## Recently Published

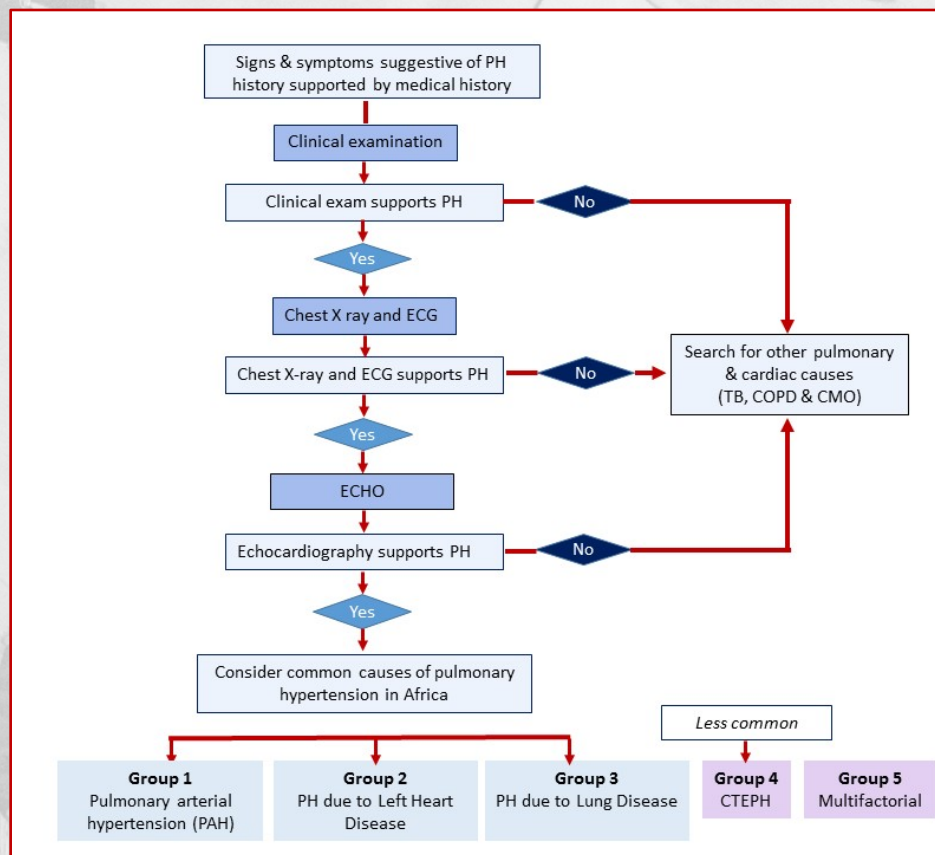
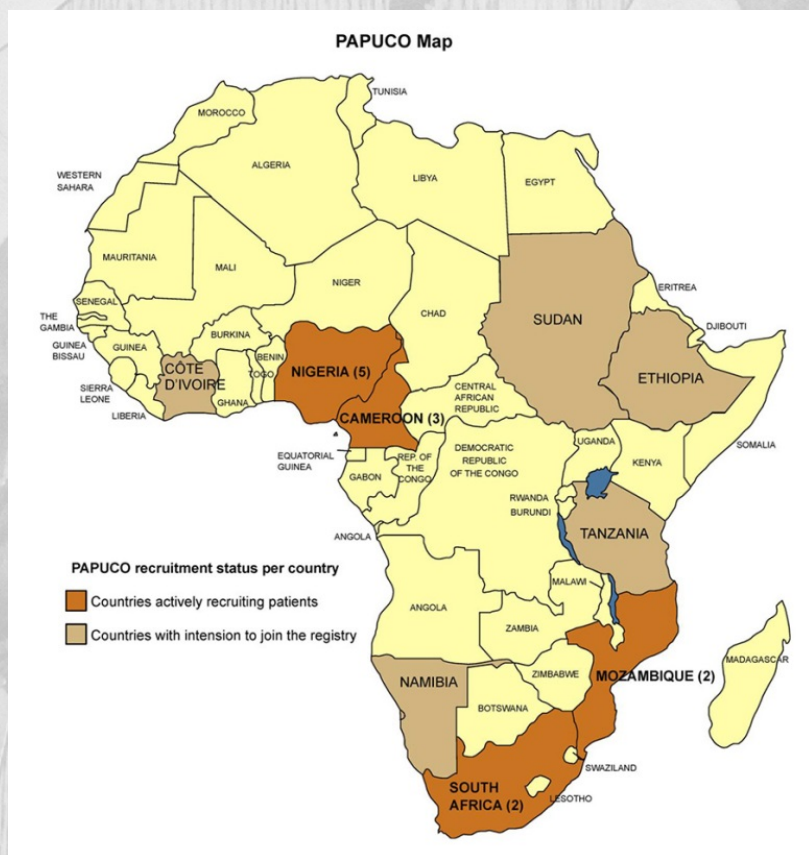
- Enhanced risk factors but low burden of heart disease in urban African primary care patients: A fundamental role for primary prevention
- Working abroad: Professor Karen Sliwa discusses living and working in different environments
- A low-cost solar-powered blood-pressure device

## In The News

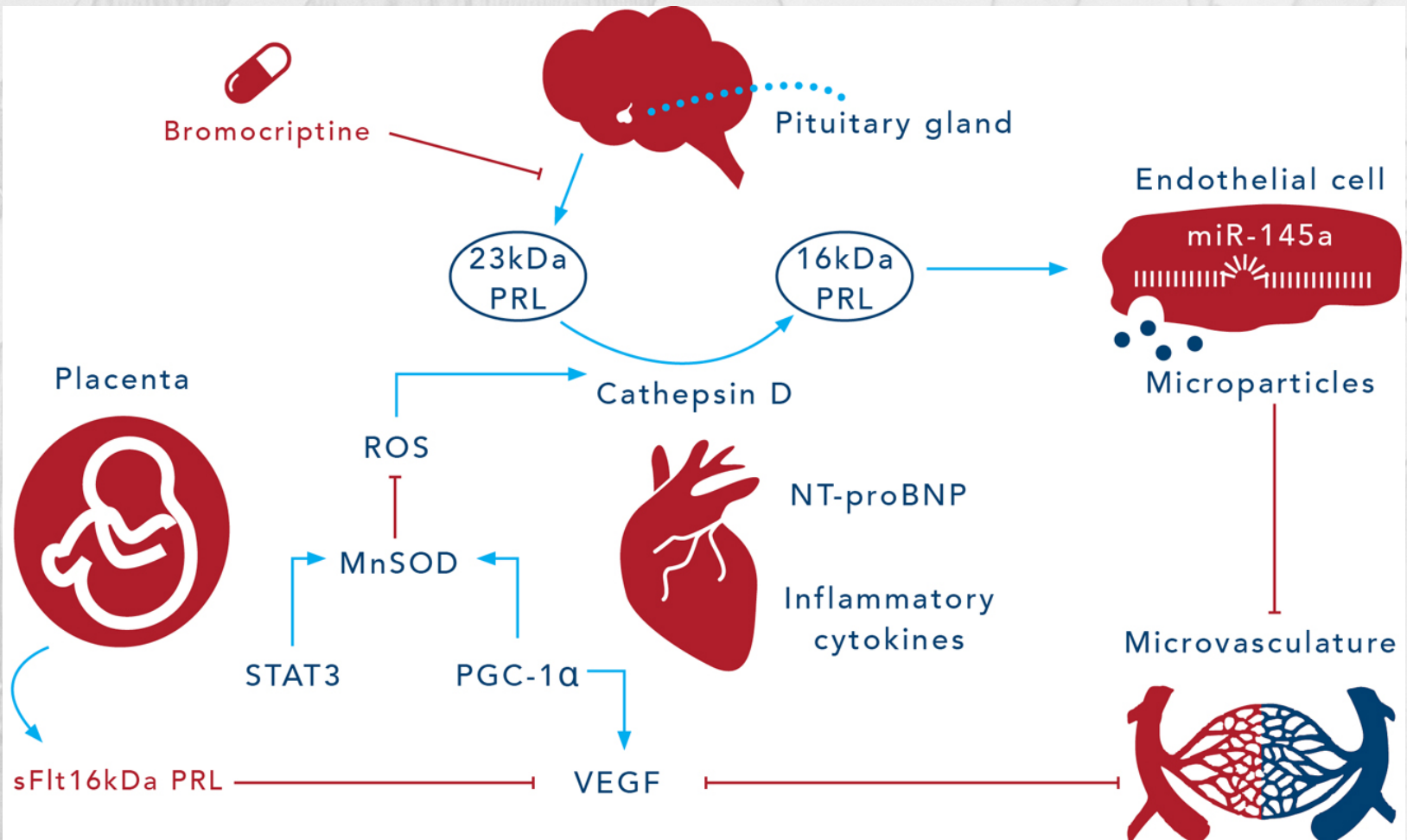
- Heart of Soweto outreach project receives over R1.6 million from BHP Billiton South Africa
- Heart of Soweto moves to primary health care
- Prestigious lecture series at Wits: cardiovascular disease in Africans and importance of lifestyle
- Cardiovascular Disease: life or lifestyle?
- Socru presents at European Heart Failure meeting



# The Pan African Pulmonary Hypertension Cohort (PAPUCO) study: implementing a contemporary registry on pulmonary hypertension in Africa







Pathogenesis of PPCM. PPCM = peripartum cardiomyopathy. PRL = prolactin. miR = micro RNA. ROS = reactive oxygen species. NT-proBNP = N-terminal pro-B-type natriuretic peptide. MnSOD = manganese superoxide dismutase. STAT3 = signal transducer and activator of transcription 3. PGC-1 $\alpha$  = peroxisome proliferator-activated receptor  $\gamma$  coactivator 1- $\alpha$ . sFlt16kDa PRL = soluble fms-like tyrosine kinase. VEGF = vascular endothelial growth factor. Sliwa K. The Lancet 2016



**Conclusion and GOOD LUCK!**





**Thank you**